



The Complete Sandon Furniture Range



Care and User Guide



Customer Service: +44 (0) 1889 272 056

IMPORTANT: PLEASE REGISTER YOUR HEX LIVING PRODUCT AFTER ASSEMBLY

Using the unique serial number, simply register your product at **www.hexliving.co.uk** or use the QR code above to access the HEX Living lifetime warranty and online support.

Affix Serial Number
HERE

Contents

1.	Individual Products	3
2.	Protective Covers	5
3.	Installation Advice	6
4.	Assembly Guidelines	6
5.	Care Advice	7
6.	Limited Warranty	7

IMPORTANT: Keep this manual for future reference.



PRIOR TO ASSEMBLY:

Please read this guide thoroughly before beginning the assembly and check that you have the correct components.

Pre-assembled parts must not be altered by the user.

If for any reason you need assistance, turn off the unit and contact our customer service team on +44 (0) 1889 272 056.

1. Individual Products

Sofa

Size: W 160 x D 97 x H 81cm

Product Code:

Anthracite Grey: 0260-1S-AG

Sage Green: 0260-1S-SG

Olive Green: 0260-1S-OG

Graphite Black: 0260-1S-GB

Porcelain White: 0260-1S-PW

Cushion Code:

Grey: 0232-CUSH-1S-GY

Oatmeal: 0232-CUSH-1S-OM



Chair

Size: W 80 x D 97 x H 81cm

Product Code:

Anthracite Grey: 0260-1C-AG

Sage Green: 0260-1C-SG

Olive Green: 0260-1C-OG

Graphite Black: 0260-1C-GB

Porcelain White: 0260-1C-PW

Cushion Code:

Grey: 0232-CUSH-1C-GY

Oatmeal: 0232-CUSH-1C-OM



Bench

Size: W 120 x D 50 x H 43cm

Product Code:

Anthracite Grey: 0260-1BL-AG

Sage Green: 0260-1BL-SG

Olive Green: 0260-1BL-OG

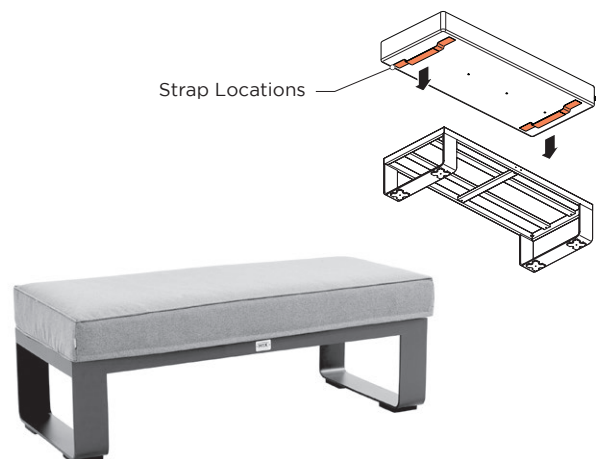
Graphite Black: 0260-1BL-GB

Porcelain White: 0260-1BL-PW

Cushion Code:

Grey: 0232-CUSH-1BL-GY

Oatmeal: 0232-CUSH-1BL-OM



CAUTION:

Whilst every effort has been made in the manufacture of your appliance to remove any sharp edge, you should handle all components with care to avoid accidental injury.

1. Individual Products (Continued)

Footstool

Size: W 60 x D 60 x H 46cm

Product Code:

Anthracite Grey: 0260-1F-AG

Sage Green: 0260-1F-SG

Olive Green: 0260-1F-OG

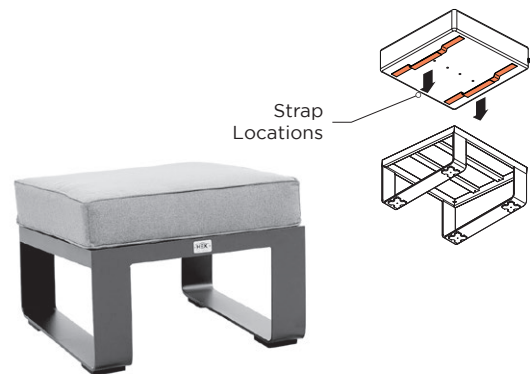
Graphite Black: 0260-1F-GB

Porcelain White: 0260-1F-PW

Cushion Code:

Grey: 0232-CUSH-1F-GY

Oatmeal: 0232-CUSH-1F-OM



Rectangular Table

Size: W 150 x D 90 x H 45cm

Product Code:

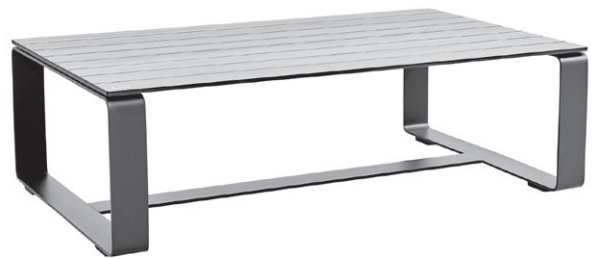
Anthracite Grey: 0260-RT-AG

Sage Green: 0260-RT-SG

Olive Green: 0260-RT-OG

Graphite Black: 0260-RT-GB

Porcelain White: 0260-RT-PW



Square Table Large

Size: W 120 x D 120 x H 45cm

Product Code:

Anthracite Grey: 0260-STL-AG

Sage Green: 0260-STL-SG

Olive Green: 0260-STL-OG

Graphite Black: 0260-STL-GB

Porcelain White: 0260-STL-PW



Side Table Small

Size: W 90 x D 90 x H 45cm

Product Code:

Anthracite Grey: 0260-STs-AG

Sage Green: 0260-STs-SG

Olive Green: 0260-STs-OG

Graphite Black: 0260-STs-GB

Porcelain White: 0260-STs-PW



1. Individual Products (Continued)

Side Table

Size: W 45 x D 45 x H 45cm

Product Code:

Anthracite Grey: 0260-ST-AG

Sage Green: 0260-ST-SG

Olive Green: 0260-ST-OG

Graphite Black: 0260-ST-GB

Porcelain White: 0260-ST-PW



Fire Pit Tower

Size: W 45 x D 45 x H 78cm

Product Code:

Anthracite Grey: 0260-FPT-AG

Sage Green: 0260-FPT-SG

Olive Green: 0260-FPT-OG

Graphite Black: 0260-FPT-GB

Porcelain White: 0260-FPT-PW

Assembly:

Refer to the fire pit tower manual.



2. Protective Covers

Product Description:

Bench Large Cover

Chair Cover

Footstool Cover

Two Seater Sofa Cover

Rectangular Table Cover

Side Table Cover

Square Table Large Cover

Square Table Small Cover

Gas Fire Pit Cover

Product Code:

0260-COVER-1BL

0260-COVER-1C

0260-COVER-1F

0260-COVER-1S

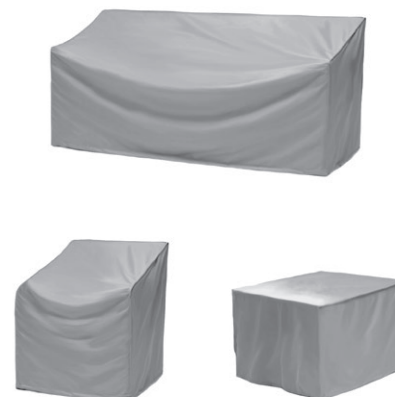
0260-COVER-RT

0260-COVER-ST

0260-COVER-STL

0260-COVER-STS

0260-COVER-FTP



3. Installation Advice



Before beginning the assembly, check that you have the correct components. If for any reason you need assistance, please contact our customer service team on +44 (0) 1889 272 056.

Important Information

Note the safe operational requirements, warnings & cautions. Use the product correctly and with care for the purpose for which it is intended. Failure to do so may cause damage and/or personal injury and will invalidate the warranty. Please keep these documents safe for future use.

Safety Instructions

Cautions and instructions in this manual cannot cover all possible situations and conditions that may occur. Common sense and caution are factors which cannot be built into these products.

4. Assembly Guidelines

Please read these instructions carefully before assembly and use.

- Make sure all plastic protection is removed before assembling.
- Assembly of the product involves some large components; it is advisable to have two people assemble the unit.
- Find a large, clean area to assemble your product.
- Assembly should be carried out on an open, flat, level surface.
- Please refer to the parts list and assembly diagram as necessary.
- To avoid losing any small component or hardware, assemble your product on a hard level surface that does not have cracks or openings.
- To prevent any possible damage to the flooring structure, ensure this product is correctly lifted, whilst been moved from one position to another.
- Follow all steps in order to properly assemble your product.
- Wear correct safety gloves. Edges and corners can cause minor cuts if improperly handled during assembly.
- Do not force parts together as this can result in damage to the product.
- When applicable, tighten all components by hand first. Once all steps are completed, go back and fully tighten till firmly secure with the recommended handtool.
- For specific guidance relating to fire pit table assembly, please refer to the separate manual.

TWO PERSON ASSEMBLY

Most procedures will not require two people but it may be easier to have assistance.



PERSONAL PROTECTION EQUIPMENT

We advise appropriate personal protective equipment is worn during assembly.



5. Care Advice

Congratulations on purchasing your new HEX Living product.

Designed and built to stand the test of time, HEX Living products are low maintenance; requiring little more than a periodic clean to keep them looking their very best.

Here's some advice on how to look after your items:

1. Regularly wipe down metal frames with detergent-free, warm soapy water and a non-abrasive sponge to clean. Avoid using heavy detergents or power washers.
2. Perform maintenance checks at least once a year and ensure all fixings are secure.
3. Clean cushions using a soft brush and a fabric cleaner.
4. To avoid permanent stains, clean up spillages immediately.
5. Cover your furniture set when not in use to avoid damage.
6. Place coasters beneath glasses and tableware to prevent the marking your table top

Important Information

- Open with care: Using a Stanley knife or scissors whilst opening the packaging may cause accidental damage to your new garden furniture set. This will not be covered by your warranty.
- We recommend you use covers to protect your outdoor furniture when not in use. Covers must be removed periodically to minimise moisture build up.
- Remove garden furniture covers with care: Whilst durable, they can rip when removed with excessive force.

6. Limited Warranty

HEX Living products come with a lifetime warranty on all metal components and a one year warranty on fire pit elements, commencing from the date of purchase. The warranty includes manufacturing deficiencies and defective parts and extends to the replacement of these parts. Expenses for shipping, installation, replacement of worn parts and other cost are not covered by the warranty. The warranty lapses in case of mishandling and if any kind of unauthorised modifications are made to the appliance.

IMPORTANT: Keep this manual for future reference.

