



Fire Pit Table Manual



Customer Service: +44 (0) 1889 272 056

IMPORTANT: PLEASE REGISTER YOUR HEX LIVING PRODUCT AFTER ASSEMBLY

Using the unique serial number, simply register your product at **www.hexliving.co.uk** or use the QR code above to access the HEX Living lifetime warranty and online support.


Affix Serial Number
HERE

Contents

1. Information	3
2. Parts List	4
3. Caution	5
4. Safety Guidelines	6
5. Assembly Guidelines	7
6. Fire Pit Table Assembly	8
7. Glass Surround and Lava Rock Assembly	11
8. Connecting / Disconnecting a Gas Bottle	12
9. Operating Instructions	14
10. Cleaning and Maintenance	15
11. Storage (After use)	16
12. Troubleshooting	17
13. Limited Warranty	19

IMPORTANT: Keep this manual for future reference.

1. Information

Manufacturer	Alpha Manufacturing Hixon Ltd Pasturefields Lane, Hixon, Staffordshire, ST18 0PH, United Kingdom	 2575-22 PIN: 2575XXXXXXX
Product Name	Fire Pit Table	
Model Number	0232-X-FT	
Cat	I3+(28-30/37)	I3B/P(30)
Country Code	GB, BE, CY, CZ, FR, GR, IE, IT, LV, LU, PT, SK, SI, ES, CH	AL, BE, BG, CY, HR, DK, EE, FI, FR, HU, IS, IT, LT, LU, MT, MK, NL, NO, RO, SK, SI, SE, TR
Gas Type and Pressure	G30 butane at 28-30mbar and G31 propane at 37mbar	G30 butane and G31 propane at 30mbar
Rating	8.8KW(640g/h)	8.8KW(640g/h)
Orifice	1.49mm	1.49mm
 CAUTION:		
FOR OUTDOOR USE ONLY.		
READ THE INSTRUCTIONS BEFORE USE.		

Fire Pit Table

Product Code:

Anthracite Grey: 0232-FT-AG

Sage Green: 0232-FT-SG

Olive Green: 0232-FT-OG

Graphite Black: 0232-FT-GB

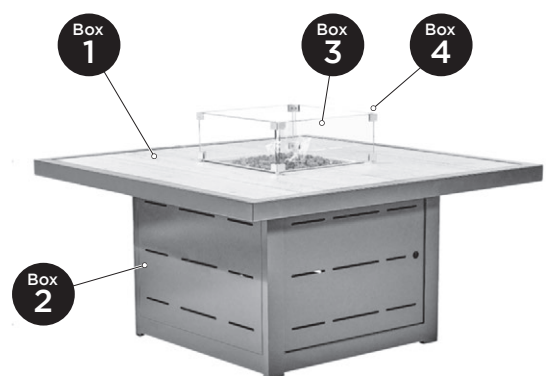
Porcelain White: 0232-FT-PW

- Size: W 127 x D 127 x H 67cm
- Protective cover: 0232-COVER-FT

Packaging Contents:

- Box **One** : Fire pit table top and fixings
- Box **Two** : Fire pit base and fixings
- Box **Three** : Fire pit burner and bag of lava rocks
- Box **Four** : Glass surround kit

Note: Boxes **Three** and **Four** are located inside box **Two**



2. Parts List



PRIOR TO ASSEMBLY:

Please read this guide thoroughly before beginning the assembly and check that you have the correct components.

Pre-assembled parts must not be altered by the user.

If for any reason you need assistance, turn off the unit and contact our customer service team on +44 (0) 1889 272 056.

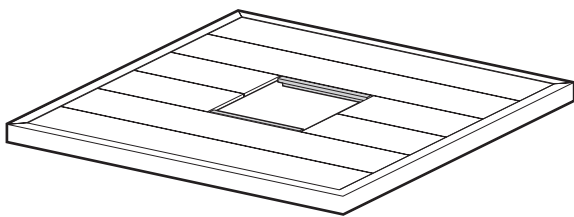
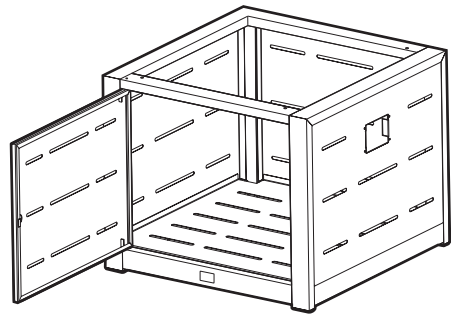
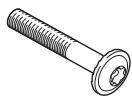


Table top x1



Base x1



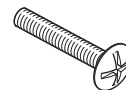
M6 x 45mm torx bolt x4



Spacer x4

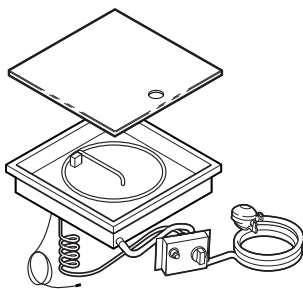


M4 flange nut x4



M4 x 30mm bolt x4

Box
3



Fire pit burner assembly x1

Package contents:

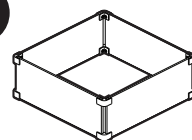
- Burner x1
- Control panel x1
- Gas regulator x1
- Hoses

Box
3



Bag of lava rocks x1

Box
4



Glass surround kit x1

Package contents:

- Tempered glass x4
- Corner brackets x8
- Screws x16
- Protective screw inserts x16

Note: AAA battery x1, is required for the electronic igniter (not supplied).

3. Caution

CAUTION:

FOR OUTDOOR USE ONLY.

The use of this product in enclosed spaces is dangerous and strictly **PROHIBITED**.

This product must be installed in accordance with the rules in force, and used only in a sufficiently ventilated space. Consult instructions before assembly and use of the product.

WARNING: THIS PRODUCT HAS A NAKED FLAME. THE GLASS SURROUND MUST BE USED FOR ALL USERS.

No part of the guard shall be permanently removed.

Be careful, accessible parts may be very hot. Keep away from young children.

Not to be used for the heating of domestic premises.

Do not store or use petrol or other flammable vapour or liquids in the vicinity of this product.

IF YOU SMELL GAS:

1. Shut-off gas supply to product.
2. Extinguish any open flame, avoid using any electrical appliances.
3. Check gas connections with soap solution.
4. If odour still exists, immediately contact your emergency services.

WARNING:

CARBON MONOXIDE HAZARD

This appliance can produce carbon monoxide which has no odour.

Using it in an enclosed space can kill you.

Never use this appliance in an enclosed space such as; a camper, tent, or, inside your home.



4. Safety Guidelines



IMPORTANT:

Hazardous fire or explosion may result if these instructions are ignored.

It is the user's responsibility to see that this product is properly assembled, installed, and taken care of. Failure to follow instructions in this manual could result in serious bodily injury and/or property damage.

Any modification of the product, misuse, or failure to follow the instructions may be dangerous and will invalidate your warranty.

- Children and adults should be alerted to the hazards of high surface temperatures and kept at a safe distance while fire pit is in use.
- Do not leave the lit fire pit unattended when alight. Keep children and pets away from the product at all times.
- The use of alcohol, prescription or non-prescription drugs may impair the ability to safely operate the product.
- Never use unauthorised replacement components for this product. Such use may void the warranty and could result in a hazardous operating condition.
- Do not use the product unless it is completely assembled and all parts are securely fastened and tightened.
- Never obstruct the ventilation openings in the gas bottle container compartment.
- Avoid tipping, and only operate on a solid, firm flat ground.
- Do not move the fire pit when in use.
- Keep all electrical cables away from a hot outdoor fire pit.
- Turn off the gas supply at the gas bottle after use.
- The product should not be used in basements or below ground level.
- Do not stand or jump on the table.
- Leak test all connections after exchanging the gas bottle or before first use after a long period, using the method is described in section 8.
- Never use a gas bottle with a damaged body, valve, collar, or footing.
- Never use charcoal, lighter fluid, petrol, kerosene, or alcohol within this product.
- Do not store or use petrol, flammable liquids or vapours within 25 feet (7.6m) from this product.

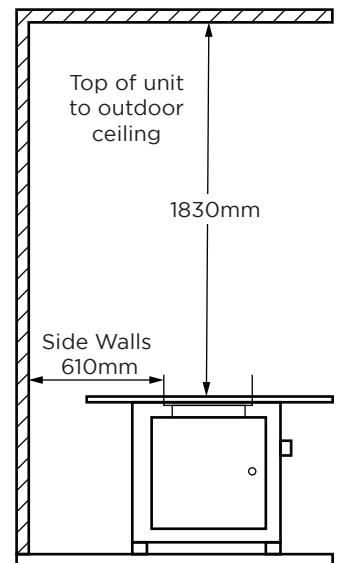


Fig.1 - Minimum clearance.

5. Assembly Guidelines

Please read these instructions carefully before assembly and use.

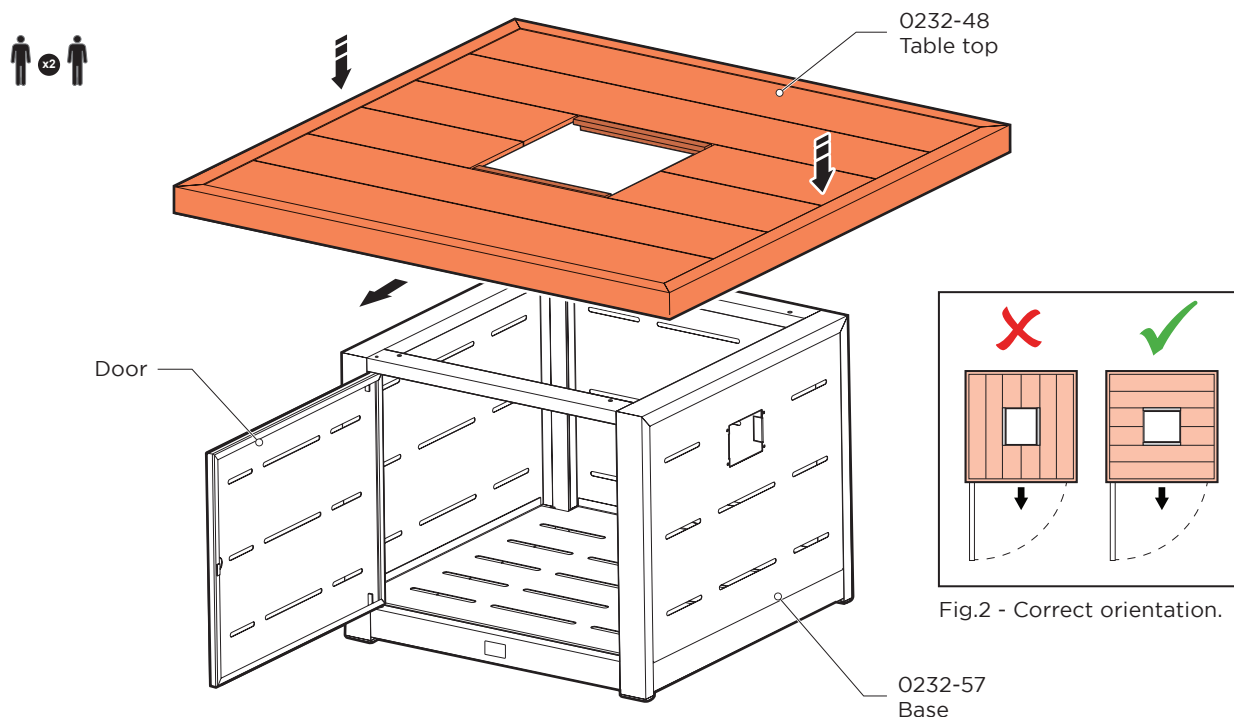
- Make sure all plastic protection is removed before assembling.
- Assembly of the product involves some large components; it is advisable to have two people assemble the unit.
- Find a large, clean area to assemble your product.
- Assembly should be carried out on an open, flat, level surface.
- Please refer to the parts list and assembly diagram as necessary.
- To avoid losing any small component or hardware, assemble your product on a hard level surface that does not have cracks or openings.
- To prevent any possible damage to the flooring structure, ensure this product is correctly lifted, whilst been moved from one position to another.
- Follow all steps in order to properly assemble your product.
- Wear correct safety gloves. Edges and corners can cause minor cuts if improperly handled during assembly.
- Do not force parts together as this can result in damage to the product.
- When applicable, tighten all components by hand first. Once all steps are completed, go back and fully tighten till firmly secure with the recommended handtool.



CAUTION:

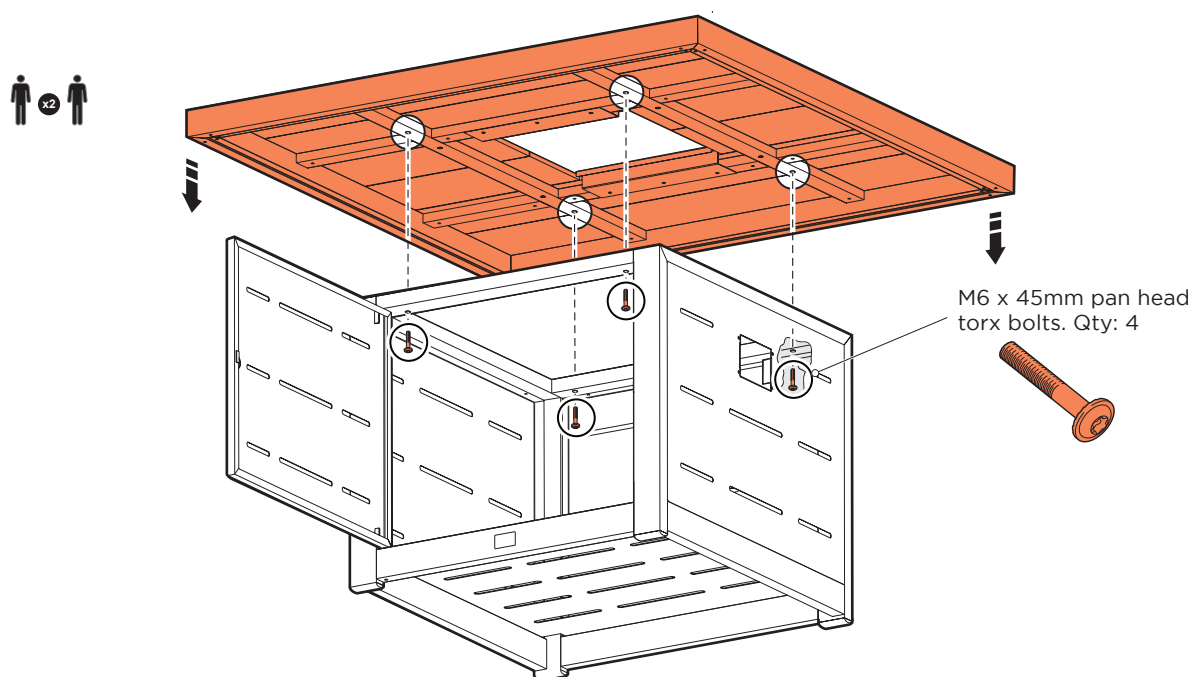
Whilst every effort has been made in the manufacture of your appliance to remove any sharp edge, you should handle all components with care to avoid accidental injury.

6. Fire Pit Table Assembly



1

Carefully locate the fire pit table top into position, taking into account the orientation as shown in fig.2



2

Secure the table top into position using the fixings, provided.

Tool required: T30 torx bit.



Most procedures will not require two people but it may be easier to have assistance.

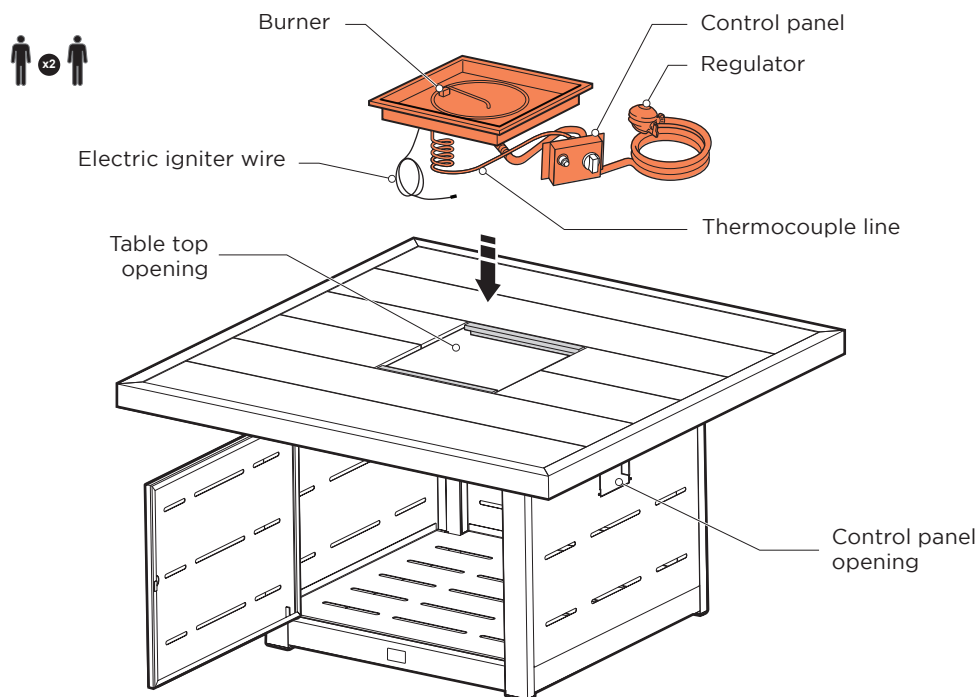


PERSONAL PROTECTION EQUIPMENT

We advise appropriate personal protective equipment is worn during assembly.



6. Fire Pit Table Assembly (continued)



3

Locate the fire pit burner into the opening in the top of the table ensuring the control panel and thermocouple pipe are not damaged in the process.

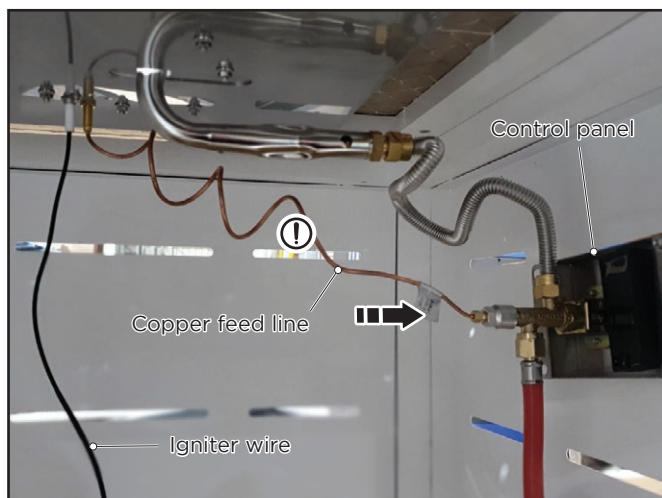


Fig.3 - Location of control panel and connections.

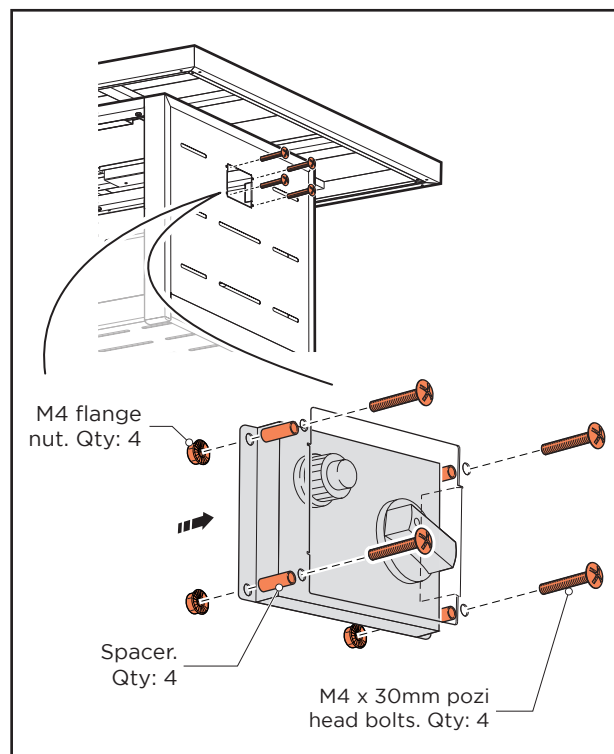


Fig.4 - Control panel location and fixings.

4

Locate and secure control panel into the opening in the table side using the fixing, shown in fig.4

Note: Be careful with the copper feed line.

Tools required: Flat bladed screwdriver,
7mm socket or spanner.



6. Fire Pit Table Assembly (Continued)

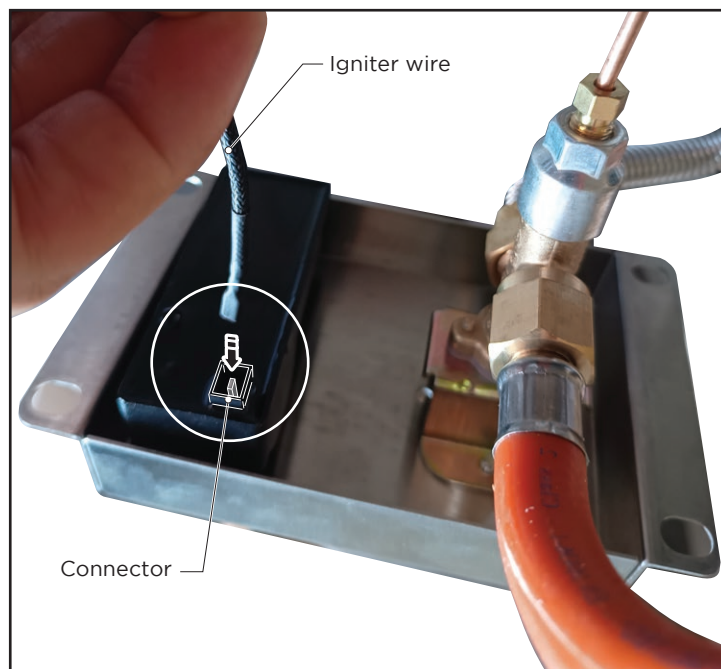
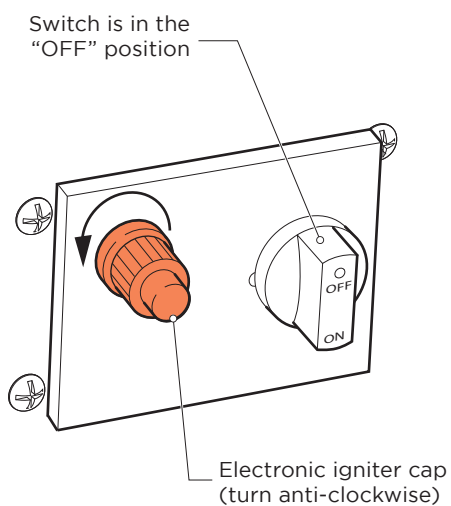


Fig.5 - Location for igniter cable, connect back of the control panel.

5

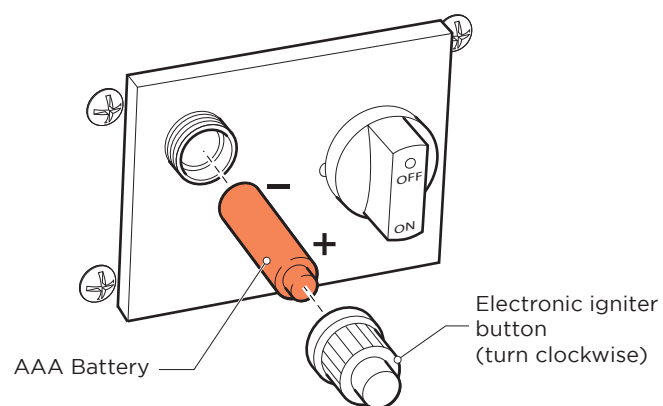
Attach the igniter wire to the connector on the back of the control panel, shown in fig.5.

Control Panel - Inserting AAA Battery



6A

Make sure the switch is in the "OFF" position, locate and unscrew electronic igniter button.

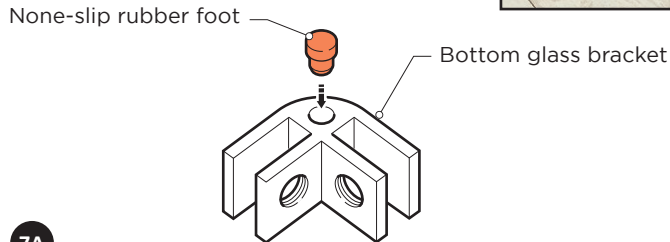
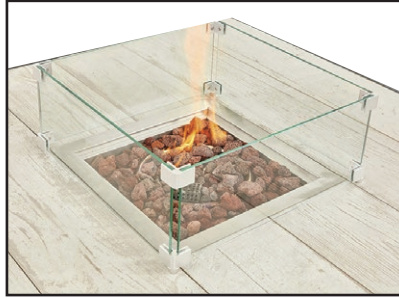


6B

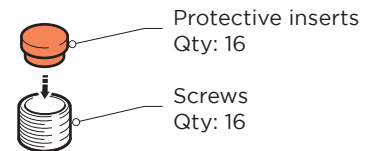
Insert AAA battery (not supplied). Replace and tighten electronic igniter button.

7. Glass Surround and Lava Rock Assembly

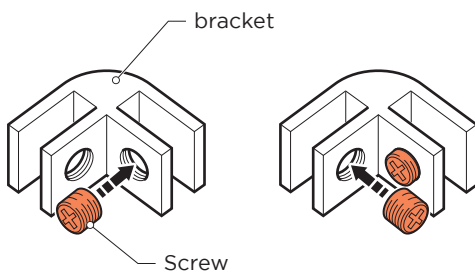
Glass Surround Assembly



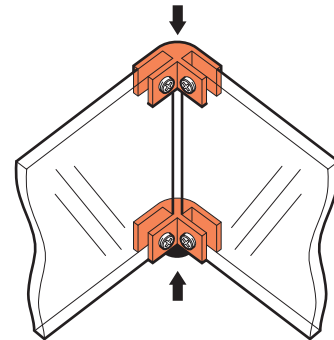
7A
Locate and secure a none-slip rubber foot into four of the corner brackets.



7B
Locate and secure protective inserts into each screw before screwing into bracket, as shown above.



7C
Loosely secure two screws into each bracket.



7D
Locate and secure brackets to glass and tighten screws.

Tool required: Pozi head screwdriver.



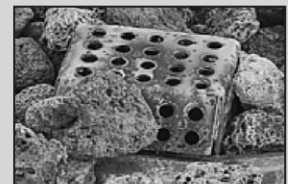
Lava Rock Placement

Evenly place the lava rocks by hand into the fire pit, avoid obstructing the ignition cover with lava rocks, shown below.



WARNING:

This ignition cover must be kept clear and free of obstructions at all times to insure proper operation, as shown here.



WARNING:

The burner ring of the fire pit should be covered by lava rocks, otherwise the flame might extinguish. For the correct and incorrect methods of filling, see images opposite.



Correct



Incorrect

8. Connecting / Disconnecting a Gas Bottle

Important Notes

- The fire pit is supplied with a G31 gas regulator suitable for 37mbr - G31 propane bottle only.
- If you wish to run your fire pit of G30 butane you will need to replace the regulator to the correct type.



DANGER: Use of an incorrect or faulty regulator is dangerous and will invalidate your warranty.

Connecting a Gas Bottle

- Before connecting, check there is no debris caught in the head of the gas bottle regulator valve.
- Connect the regulator to the gas bottle by turning knob clockwise until it stops, make sure that the pipe is not subject to twisting.
- We suggest using a 5KG gas bottle, maximum height 386mm and diameter 306mm as shown in fig.6.

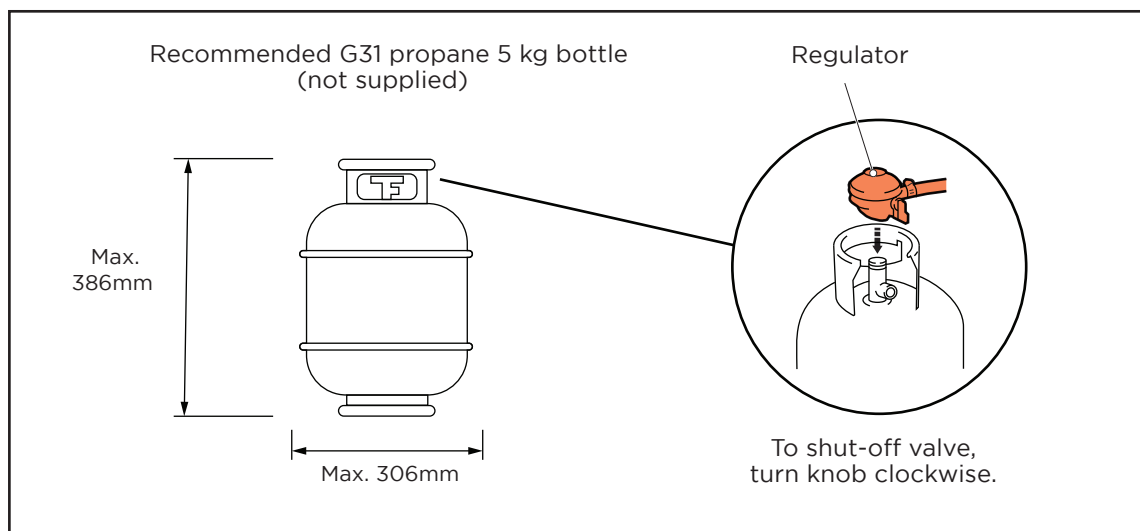


Fig.6 Gas bottle size.

- Pay attention when putting the gas bottle inside the table base, ensuring it does not touch any hot surfaces.
- Do not store spare bottles in the same table base.
- Do not block access to the shut-off valve, on the regulator.



WARNING:

Shut-off the gas bottle immediately if you smell gas.

8. Connecting / Disconnecting a Gas Bottle (Continued)

Disconnecting a Gas Bottle

1. Before disconnecting make sure the gas bottle valve is “CLOSED”
2. Disconnect regulator from gas bottle by turning it counter-clockwise until it is loose.
3. Remove the gas bottle from the fire pit table.

 **DANGER:** Ensure the old gas bottle is stored correctly and kept away from any source of ignition.

Leak Testing (To be performed in a well-ventilated area)

1. Confirm all appliance control knobs are in the off position.
2. Open the gas control valve on the gas bottle regulator.
3. Check for leaks by brushing or spraying a soap solution over all gas system joints, including all valve, hose and regulator connections see fig 8.
4. Never use an open flame to test for leaks.
5. If bubbles form over any of the joints, there is a leak. Turn off the gas supply and re-tighten that joint and retest.

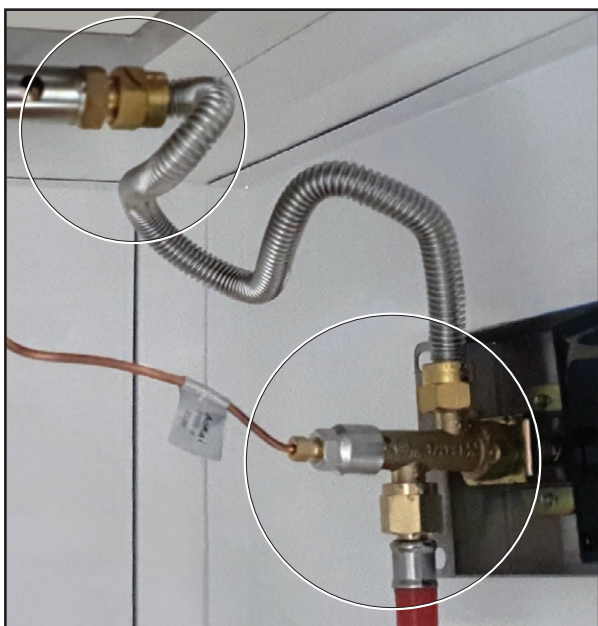


Fig. 7 Locations to check for possible leaks.

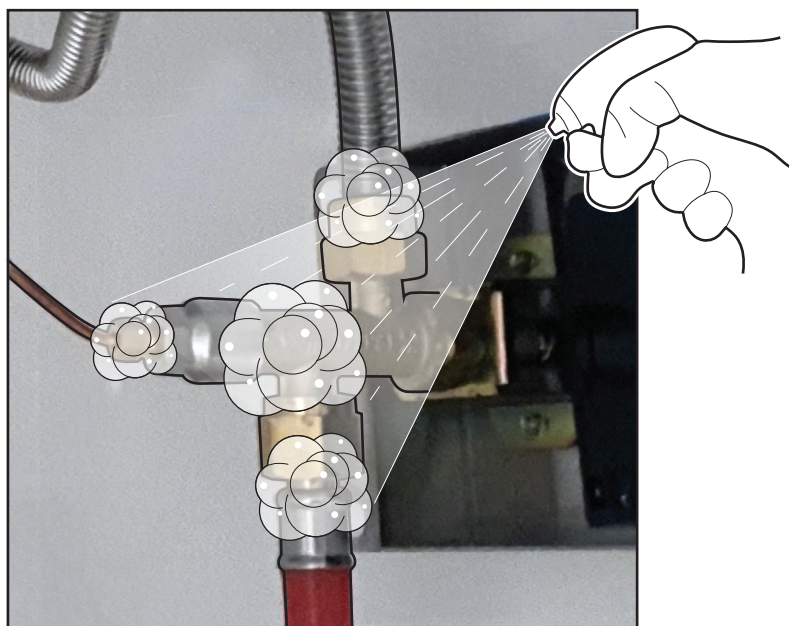


Fig. 8 Apply soap solution over all joints.



WARNING:

If the leak can not be stopped, immediately shut-off gas supply, disconnect and contact your gas bottle supplier or our customer service team on +44 (0) 1889 272 056. Do not reconnect until the leak has been fixed.

9. Operating Instructions



WARNING:

Read all instructions prior to use.

Keep face and body away from burner area. Cover must be removed when burner is in operation.

Never obstruct the air vents around your fire pit.

Before Ignition

Inspect the gas supply hose prior to turning the gas “ON”. If there is evidence of cuts, wear or abrasion, it must be replaced prior to use and a leak test performed.

Ignition Instructions:

Ensure control knob is in the “OFF” position, then turn the gas bottle valve on at source.

1. Press and hold electronic igniter button. (AAA Battery not supplied).
2. Turn the burner control knob to the “HIGH” position, press and hold in. When the burner lights, release the electronic igniter button.
3. Continue to depress the burner control knob for 45 seconds and then release. If the flame goes out, repeat the procedure.
4. Adjust the flame to the desired height with the burner control knob. If the burner does not light within 10 seconds, turn the valve off and wait 5 minutes for any gas to dissipate before repeating the procedure.

IF THE UNIT WILL NOT LIGHT WITH THE ELECTRONIC IGNITER, HOLD A MATCH TO THE IGNITION AREA OF THE BURNER AND CONTINUE WITH STEP 2.

To shut down the burner, turn the burner control knob clockwise to the “OFF” position. Then turn the gas off at source (gas bottle valve).

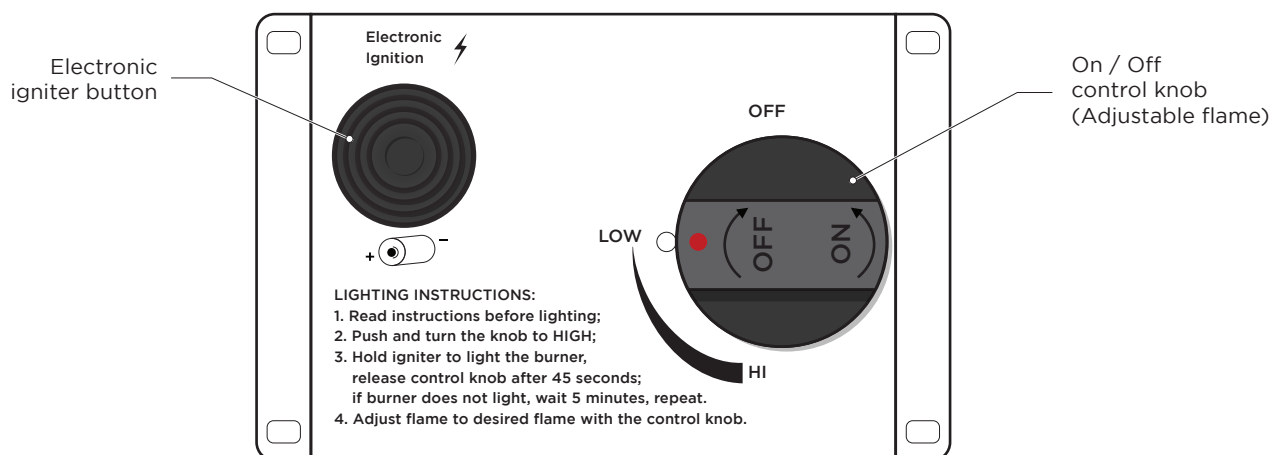


Fig.9 Turning your fire pit on / off, following the instructions.

10. Cleaning and Maintenance

To enjoy years of outstanding performance from your fire pit table, we recommended taking the following steps:

- Regularly wipe down metal frames with detergent-free, warm soapy water and a non-abrasive sponge to clean. Avoid using heavy detergents or power washers. Never use a flammable or corrosive cleaning agent.
- While washing your unit make sure the area around the burner assembly is kept dry at all times. If the gas control is exposed to water in any way, DO NOT use it, and replace the part.
- To avoid permanent stains, clean up spillages immediately.
- Perform maintenance checks at least once a year and ensure all fixings are secure.
- The fire pit should be inspected once a year by a Qualified Service Engineer. More frequent cleaning may be required according to the use of the product.
- Any guard or other protective device removed for servicing the product must be replaced before operating it.
- Burner and gas bottle compartment including air vents must be kept clean and unobstructed.
- Airflow must be unobstructed. Keep controls, burner and circulation air passageways clean.
- Cover your furniture set when not in use to avoid damage.
- Covers must be removed periodically to minimise moisture build up.
- Remove garden furniture covers with care: Whilst durable, they can rip when removed with excessive force.

Blockages:

- Spiders and insects can nest in the burner or orifices. This is a dangerous condition and can damage the appliance and render it unsafe for use.
- Signs of possible blockage include gas odour with extreme yellow tipping of flame, appliance glow is excessively uneven and appliance makes popping noises.
- Clean burner holes by using a heavy duty pipe cleaner. Compressed air may help clear away smaller particles.
- After the burner and lava rocks have completely cooled down, remove it from the bowl and use a soft brush to get rid of the mild stains or loose dirt. Wipe clean with a soft cloth.
- Clean the bowl and afterward put lava rocks again in proper position.
- Make sure the gas supply is in the “OFF” position before changing the battery.
- Please contact customer services for any replacement parts. +44 (0) 1889 272 056

11. Storage (After Use)

During periods of extended inactivity or when transporting:

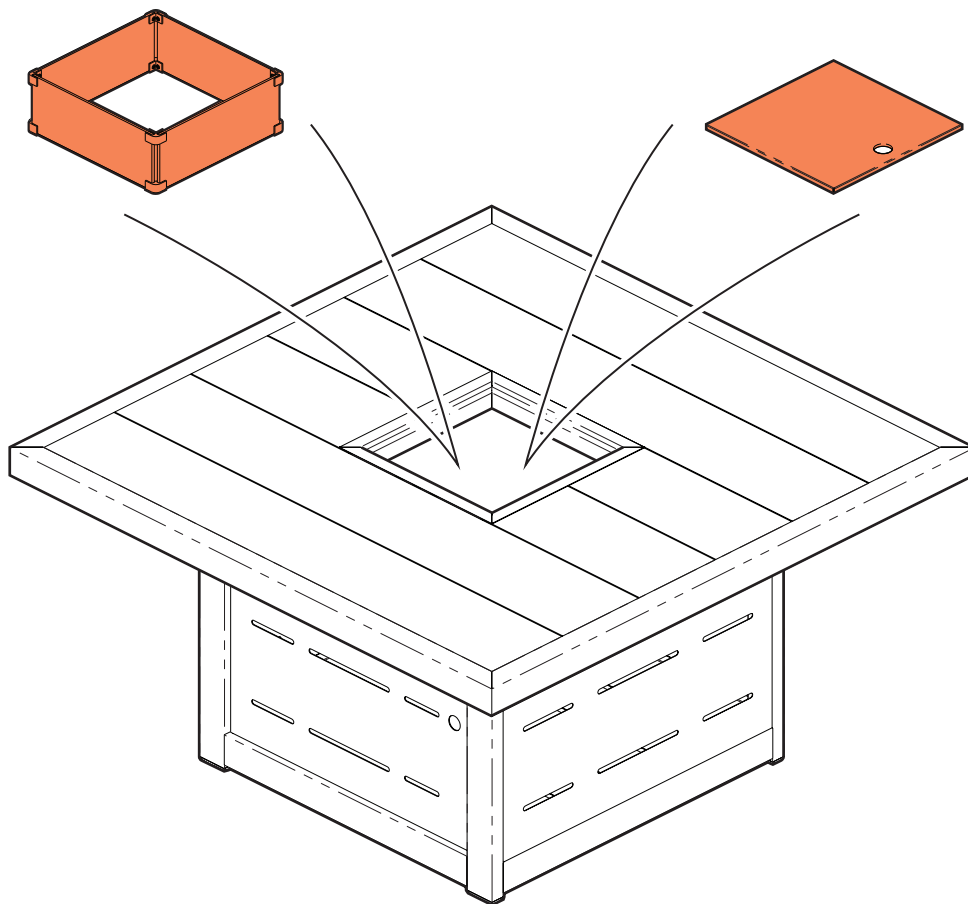
- Turn the control knob to the “OFF” position.
- Disconnect gas bottle and move to a secure, well ventilated outdoor location and avoid storing in direct sunlight.
- Store appliance upright in an area sheltered from direct sunlight with inclement weather conditions (such as rain, sleet, hail, snow, dust and debris).
- We recommend covering the appliance to protect exterior surfaces and to prevent the build up of excess dust. Covers must be removed periodically to minimise moisture build up.

Note: Wait until appliance is cool before covering.

Fire Pit Protective Covers

- **Option One.**
Glass surround

- **Option Two.**
Fire pit metal cover



12. Troubleshooting

Problem:	Condition:	Solution suggested:
Burner won't light	Control knob is not turned to maximum position "HI".	Turn control knob to maximum position "HI".
	Gas bottle valve is closed/ empty.	Open the valve / replace gas bottle with a new one.
	Blockage in the injector.	Clean or replace injector.
	Air in the gas circuit.	Open gas line and bleed it (pressing control knob in) for up to 1 minute or until you smell gas.
	Low gas pressure.	Replace gas bottle with a new one.
	Igniter fails.	Use match to light burner; change battery or obtain new igniter and replace it.
Burner won't stay lit	Dirty build up around burner.	Clean dirt around the burner.
	Low flames or not full running around the burner.	Flame spreader holes partially closed; clean the burner.
	Thermocouple is not operating correctly.	Replace thermocouple (FSD).
	Low gas pressure.	Replace gas bottle with a new one.
Burner flame is low Note: Do not operate appliance below 5°C	Outdoor temperature is greater than 5°C and gas bottle is than 25 % full.	Replace gas bottle with a new one.
	Gas pipe is bent or kinked.	Straighten hose and perform leakage test on gas pipe.
	Control knob is fully turned to maximum position "HI".	Turn control knob to "OFF" position, let the burner cool to room temperature and check burner and orifices for blockage.
Carbon build-up	Dirty or film on burner.	Clean burner.

12. Troubleshooting (Continued)

Flash back (Flame inside burner)	Burner ports are blocked.	Wait 2 minutes then follow the ignition procedure to ignite burner. If problem is continuous, switch-off and please contact our customer service team on +44 (0) 1889 272 056.
Thick black smoke	Blockage in the burner.	Turn control knob to “OFF” position, let the appliance to cool to room temperature and remove blockage and clean burner inside and out.

13. Limited Warranty

Our fire pit table comes with a lifetime warranty on all metal components and a one year warranty on the fire pit elements, commencing from the date of purchase. The warranty includes manufacturing deficiencies and defective parts and extends to the replacement of these parts. Expenses for shipping, installation, replacement of worn parts and other cost are not covered by the warranty. The warranty lapses in case of mishandling and if any kind of unauthorised modifications are made to the appliance.

IMPORTANT: Keep this manual for future reference.

