

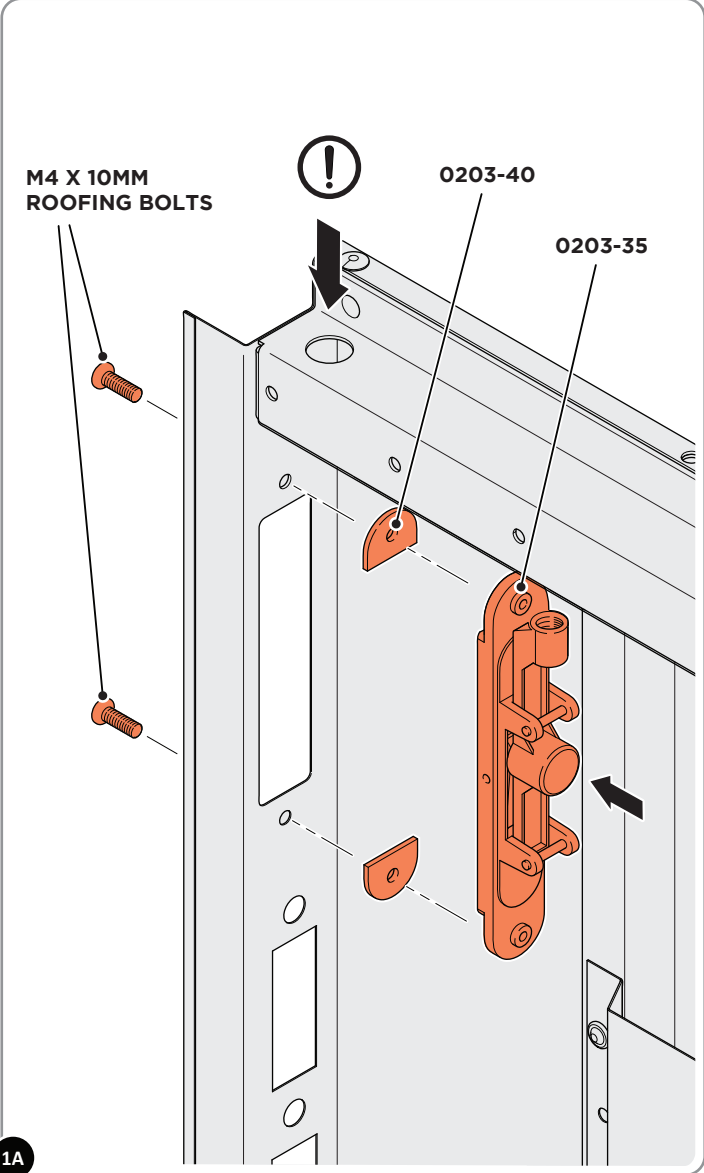


Technical Bulletin

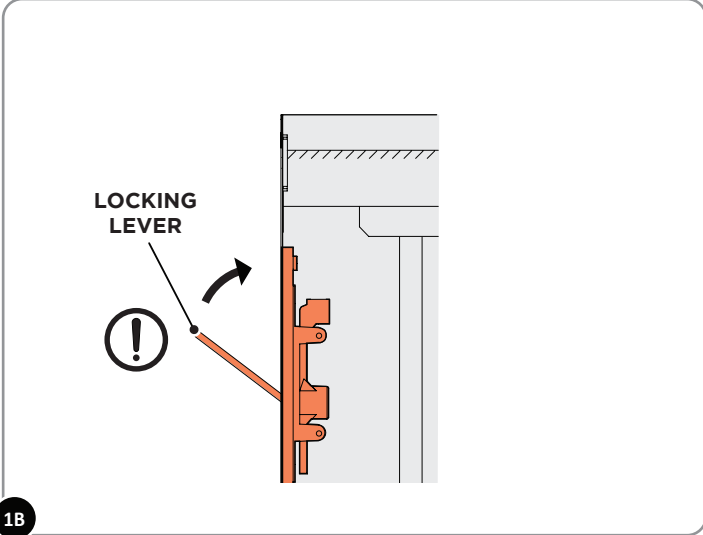
TB007

DOOR FLUSH BOLT ADJUSTMENT
INSTRUCTIONS FOR
ALL METAL SHEDS
PART REFERENCE:
FLUSH BOLT 0203-35

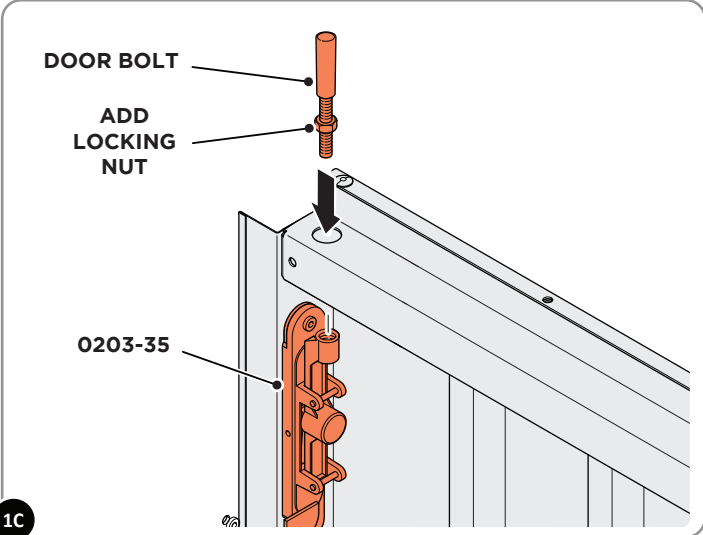
LOCATE AND SECURE DOOR BOLTS 0203-35 AT BOTH LOCATIONS INDICATED.



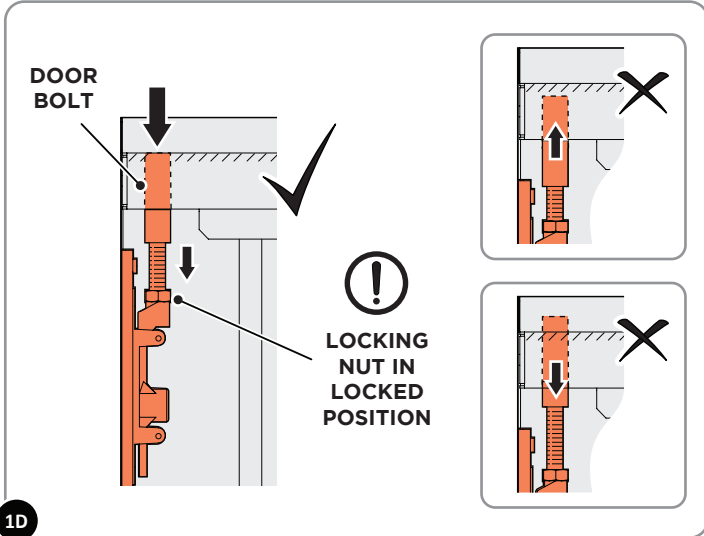
SECURE THE FLUSH BOLT BODY 0203-35, USING PACKERS 0203-40 AS SHOWN ABOVE, ENSURE THE THREADED BOSS IS FACING THE HOLE IN THE DOOR.



ENSURE THE LOCKING LEVER IS IN THE UNLOCKED POSITION, AS SHOWN ABOVE.



THREAD THE LOCKING NUT ONTO THE DOOR BOLT AND INSERT THROUGH THE HOLE IN THE DOOR AND SCREW INTO THE BOLT BODY 0203-35.



ADJUST THE DOOR BOLT UNTIL IT SITS FLUSH WITH THE EDGE OF THE DOOR. SECURE INTO POSITION WITH THE LOCKING NUT.

