



Technical Bulletin

TB012

DOOR BOLT ADJUSTMENT

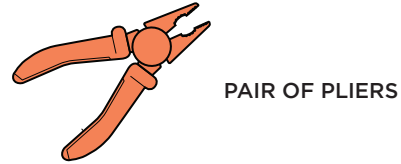
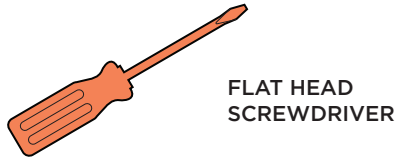
ALL METAL SHEDS

PART REFERENCE:

MORTICE LOCK 0203-32

1. CHECK THAT THE LATCH BOLT IS IN THE CORRECT ORIENTATION.

TOOLS YOU REQUIRED



CORRECT ORIENTATION, AS SHOWN BELOW.
ACTION: NONE.

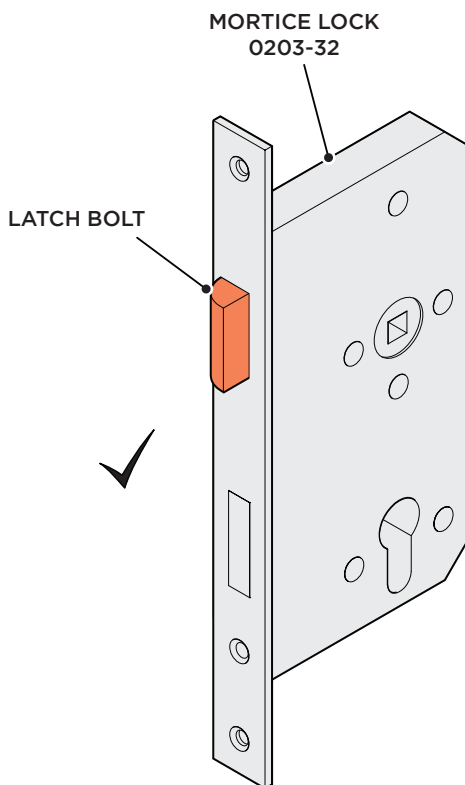


FIG. 1

INCORRECT ORIENTATION, AS SHOWN BELOW.
ACTION: REQUIRED.
• ROTATE DOOR BOLT 180°.

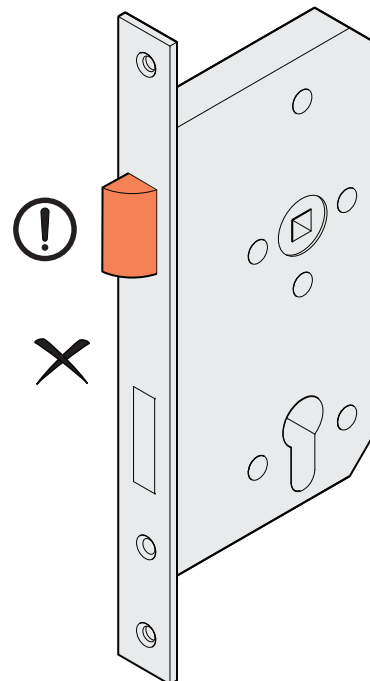
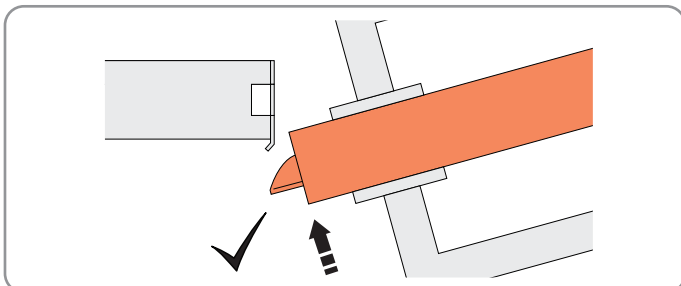
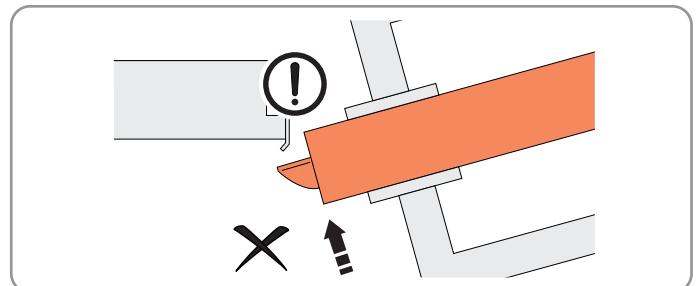


FIG. 2



CORRECT ORIENTATION; NO ISSUES WITH DOOR CLOSING.

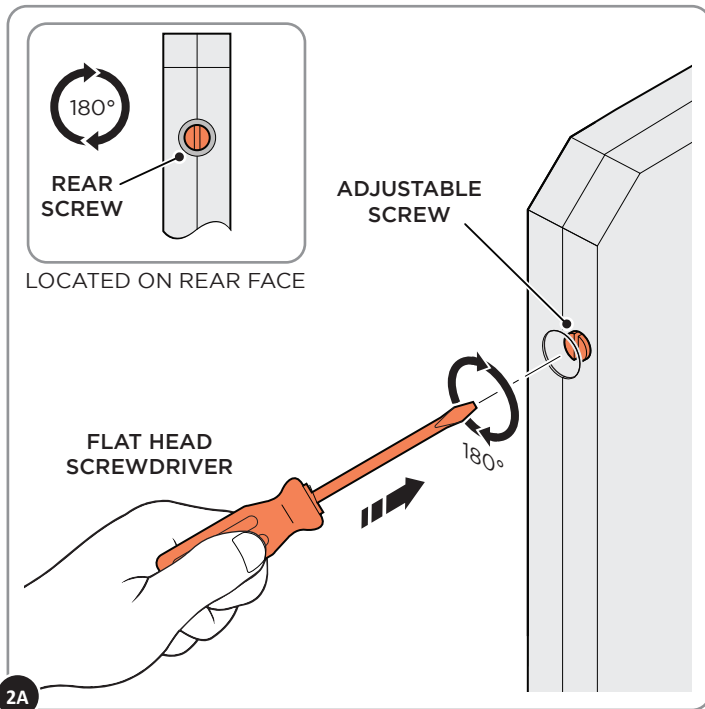


INCORRECT ORIENTATION; ISSUE WITH DOOR NOT CLOSING.

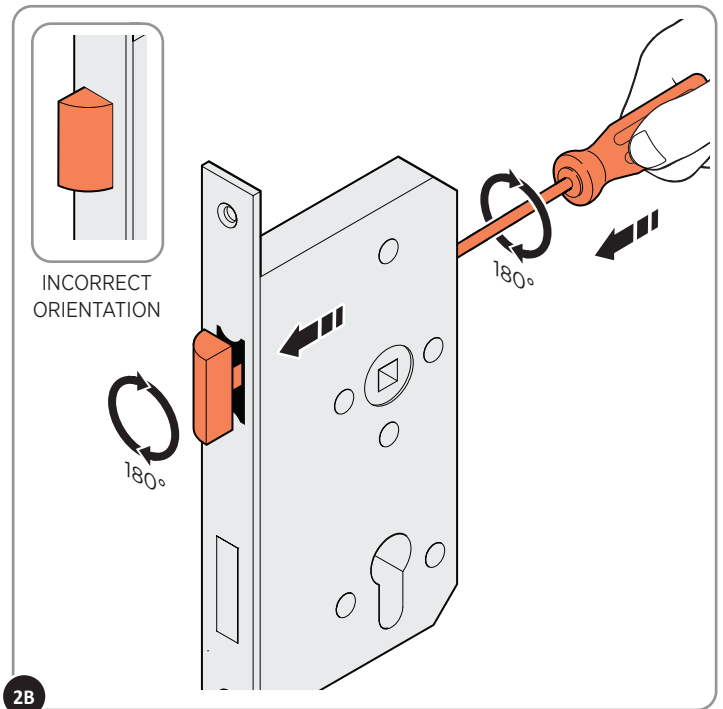
WE WOULD RECOMMEND CHECKING THE DOOR BOLT ORIENTATION, BEFORE ASSEMBLING THE MORTICE LOCK TO YOUR SHED DOOR. HOWEVER WE HAVE INCLUDED INSTRUCTIONS ON HOW TO ADJUST THIS BOTH PRE & POST INSTALLATION.

NOTE: IF YOUR DOOR BOLT ORIENTATION MATCHES FIG.1 THEN NO FURTHER ACTION IS REQUIRED.

2. LATCH BOLT ADJUSTMENT (PRIOR INSTALLATION)

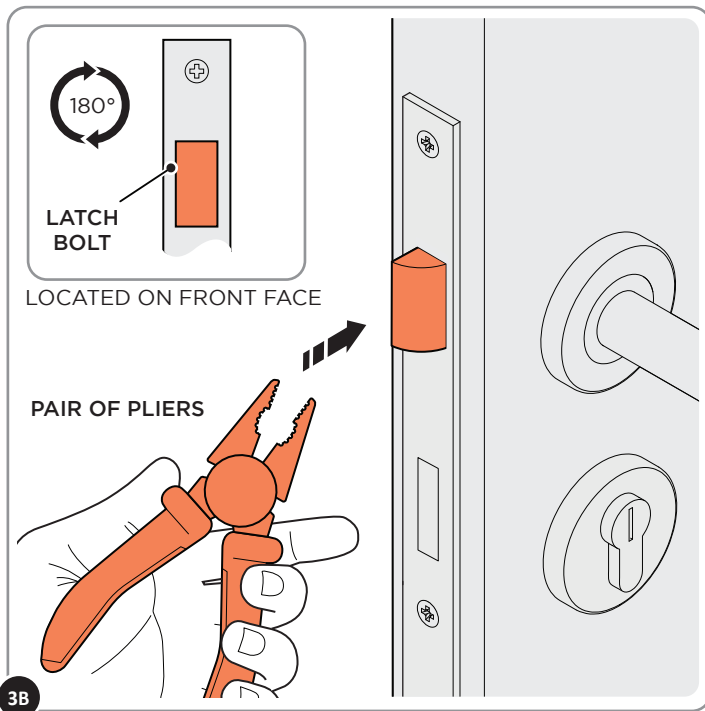


TO ADJUST THE LATCH BOLT, FIRST LOCATE THE SCREW ON THE BACK FACE OF THE MORTICE LOCK AND INSERT A FLAT HEADED SCREWDRIVER INTO THE HOLE.



WHILST APPLYING A FORWARD PRESSURE, ROTATE THE SCREW TO ADJUSTED THE ORIENTATION OF THE LATCH BOLT TO THE POSITION AS SHOWN ABOVE.

3. LATCH BOLT ADJUSTMENT (POST INSTALLATION)



IF YOUR MORTICE LOCK HAS ALREADY BEEN FITTED INTO YOUR SHED DOOR, THEN THIS CAN BE RECTIFIED USING A PAIR OF PLIERS. LOCATE THE LATCH BOLT ON THE FRONT PLATE OF THE MORTICE LOCK AND GRIP THE TOP AND BOTTOM WITH A PAIR OF PLIERS. TO ADJUST THE ORIENTATION SIMPLY PULL AND ROTATE TO THE POSITION SHOWN ABOVE.

